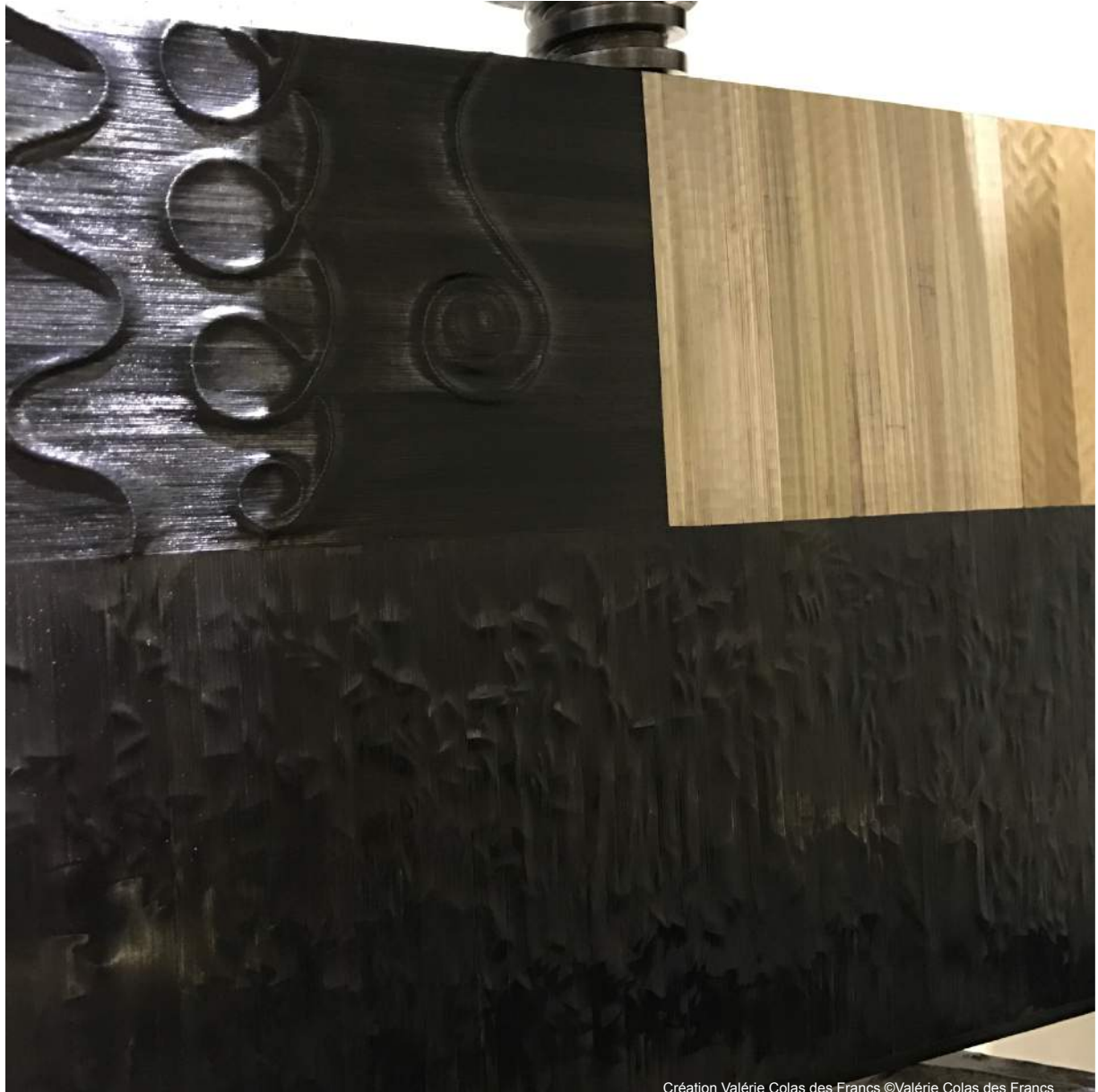


The embossing of the straw

par Valérie Colas des Francs



Création Valérie Colas des Francs ©Valérie Colas des Francs

Innovations & possibilities

The embossing of the straw

Straw is a material worked in marquetry since the 17th, in bimbelerie, furniture and interior decoration.

The techniques used of embossing go back to the XVIIIe century, Valerie Colas of the Francs knew of it thanks to the restoration of many objects of time that it practices for 17 years

The material pushes towards audacity and innovation by force of complicity

Today, it applies itself to re-inventing these techniques from an innovative angle.

Color is a wager to capture, every movement or ray of light makes it elusive and all interest wakes up when the straw is worked in volume in particular. For two years Valérie Colas des Francs is working on the development of different ways To emboss the straw. She has found methods that open a path to interesting and also very surprising straw marquetry applications, for wall decoration or for furniture. By simplifying the process it has gained autonomy in its creativity, opening up the fields of possibilities, Haute Couture, jewelery, paintings ... It is a passage towards infinite freedoms for this matter which presents interests in both its side Luminous, simple, adaptable, only in its present aspects in terms of natural and clean matter. The straw offers the time lag it is "rustic" and yet very current or even modern. Source inexhaustible of fantasy, beautiful, it astonishes, questions, interrogates ...

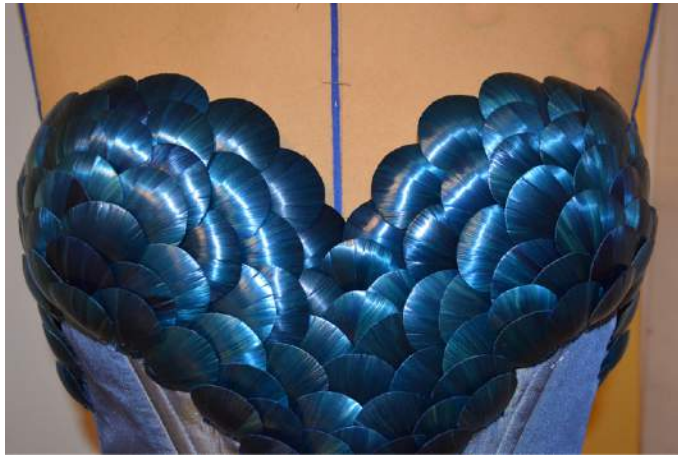
To bring out the personality of matter in our everyday worlds, and to be transported by the "simplicity of a blade of straw

Mermaid skin or bustier

Bustier composed of approximately 700 scales of 4 different sizes. Each scale is inlaid, embossed and then sewn one by one by hand.

This mermaid bustier takes on colors from gray to green through the most electric blues.

Presented deployed, the bustier seems to be a mermaid skin



Création Valérie Colas des Francs ©V.Colas des Francs



Création Valérie Colas des Francs ©Alys Thomas

Embossing tests

All the embossed straws are previously worked on paper



Embossing tests



Création Valérie Colas des Francs ©Valérie Colas des Francs



Création Valérie Colas des Francs ©Valérie Colas des Francs

Embossing tests

